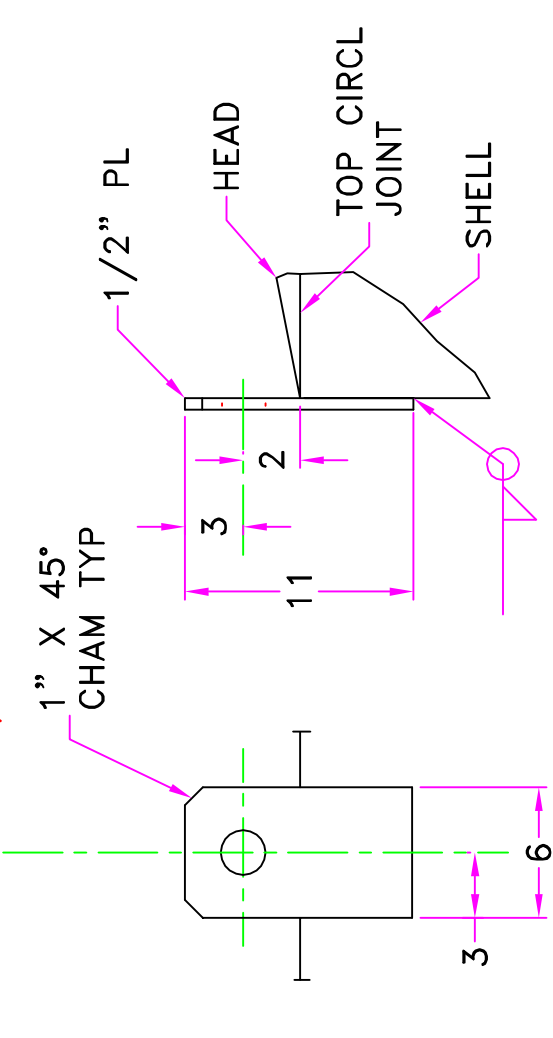


CL 2 1/8 DIA HOLE



LIFT LUG
 (2) REOD EQ SP 180° APART
 LOCATE BEST

GENERAL NOTES

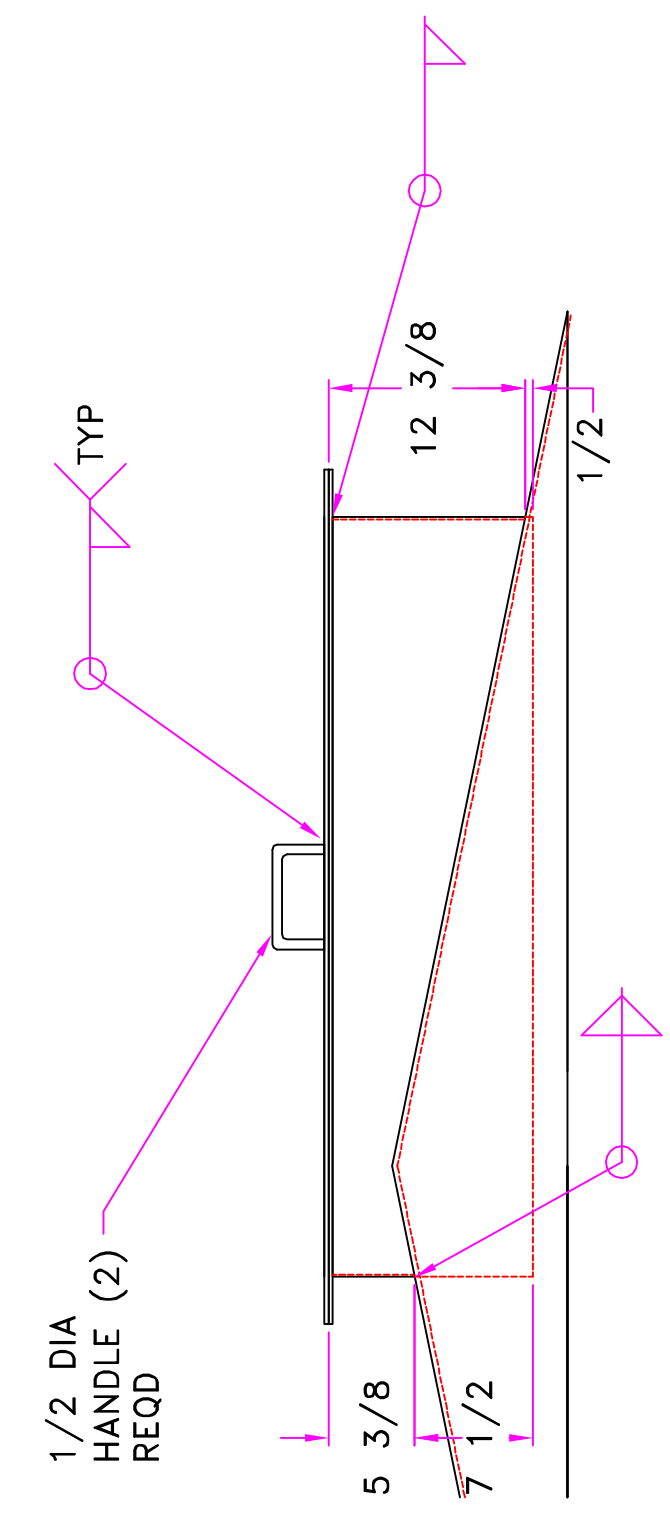
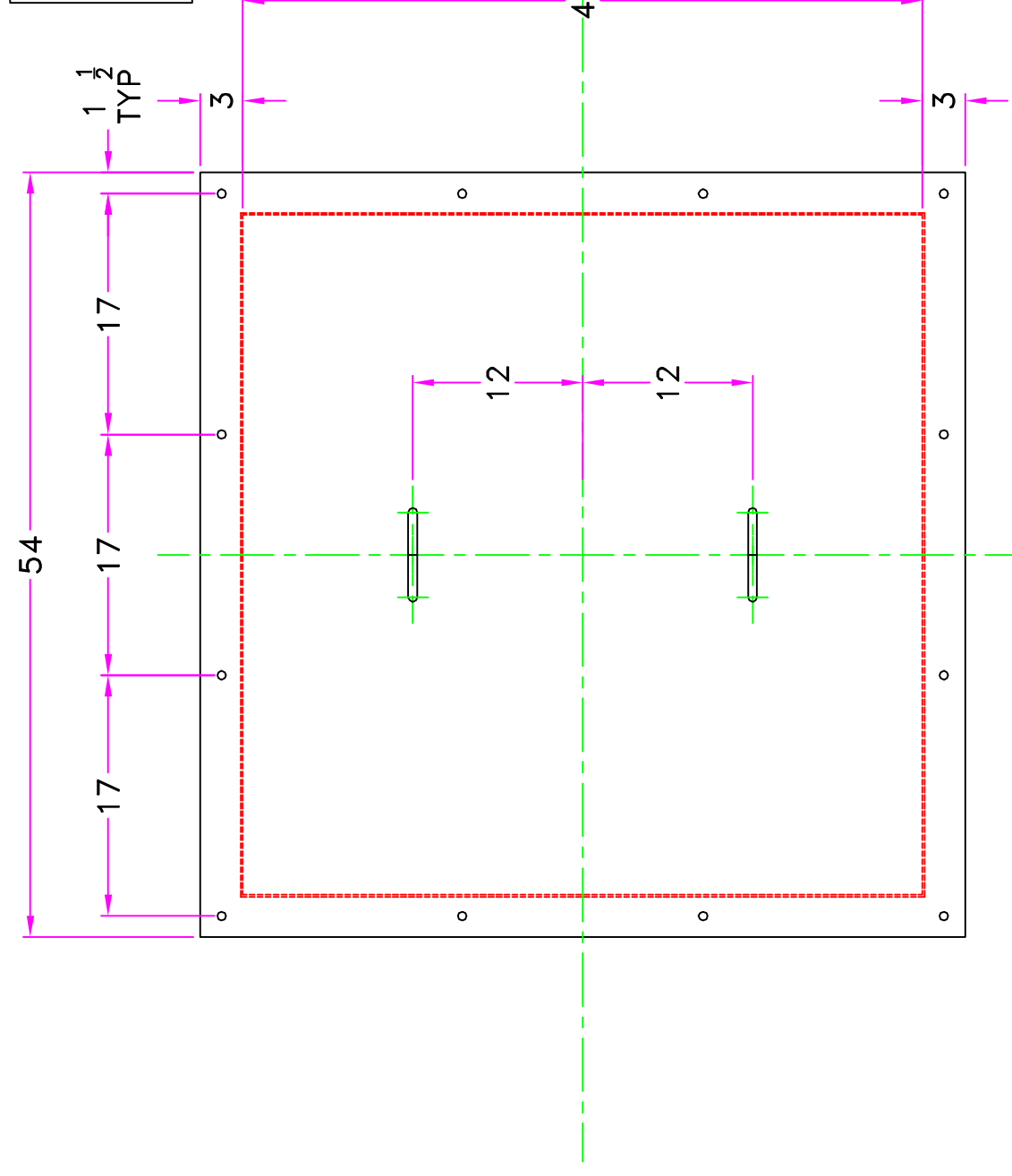
FABRICATION
 PER: MWC SHOP PRACTICES
 LABEL REOD: NO
 DESIGN PRESSURE: ATMOSPHERIC
 DESIGN TEMPERATURE: AMBIENT
 RADIOGRAPH: NONE
 CORROSION ALLOW: NONE
 STRESS RELIEVE: NONE
 TANK TEST: 2-3 PSI AIR WITH SOAP SUDS
MATERIAL
 SHELL: SA-36
 HEADS: SA-36
 MANWAY: SA-36
 FLGS & BLINDS: SA-105
 CPLGS: SA-105
 PIPE: SA-106-B
 FITTINGS: NONE
 INT ATTACHMENTS: SA-36
 EXT ATTACHMENTS: SA-36
 INT BOLTS/NUTS: NONE
 EXT BOLTS/NUTS: CS
 GASKETS: NON ASB
 SHIPPING COVERS: STD
 EXT: SP-6
 INT: SP-10
 EXT: WHITE
 INT: POTAPOX

SANDBLAST
PAINT
CAPACITY
 EST CAPACITY: 6,000 GALLONS
 EST EMPTY WT: LBS
REFERENCE
 ALL NOZZLE & MANWAY BOLT HOLES TO STRADDLE RADIAL CENTERLINES OR THEIR PARALLEL LINES, U.O.N.
 REF DWGS: NA

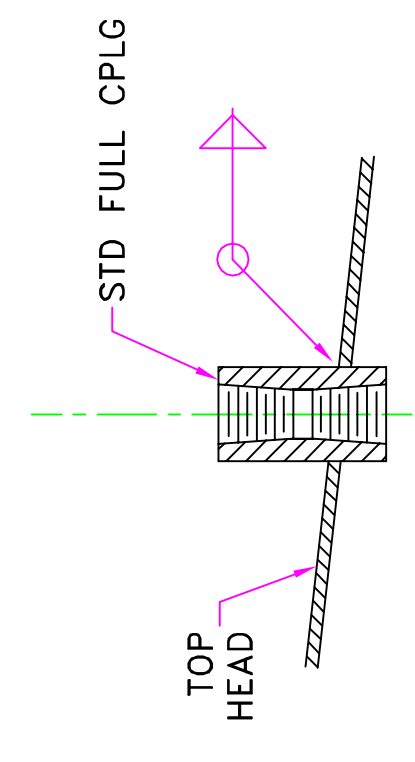
APR 21, 2015
FOR APPROVAL
ONLY

NO. REOD	1	ITEM NO.	
MODERN WELDING CO. OF IOWA, INC.			
PO Box 806 2818 Mt Pleasant St Burlington, IA 52601			
PHONE NO (319)754-6577			
UNIVERSITY OF CHICAGO			
108 OD X 13'-0" ST-SD SW AG VERTICAL TANK			
DATE	4-21-15	SCALE:	NONE
DWN BY	CS	CHKD	CS
CUST. P.O. NO.		APRD	CS
JOB NO.	080	REV	0
DWG NO.		SHT NO.	1 of 1

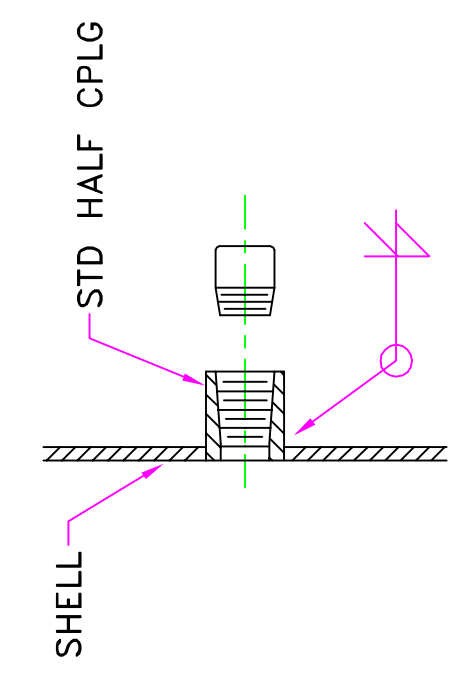
7 GA FLG PL, BLD, &
 NECK (12) HOLES 9/16
 DIA 1/2 DIA X 1 1/2 LG
 MB W/ (1) NE



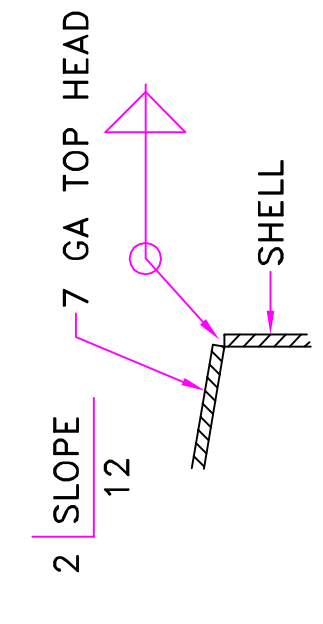
HATCH (A)



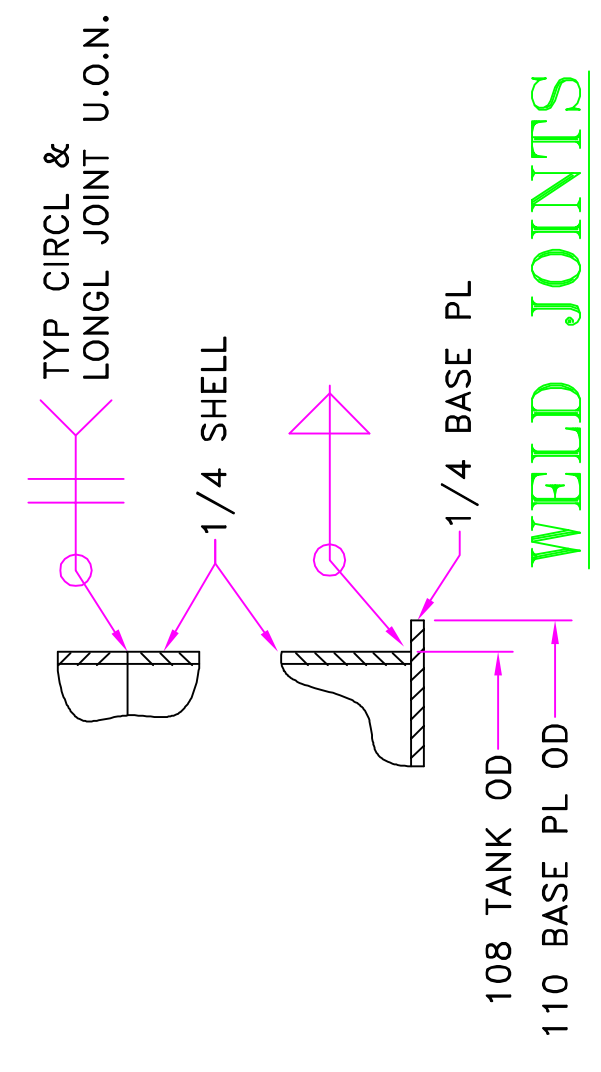
FULL CPLG (B)



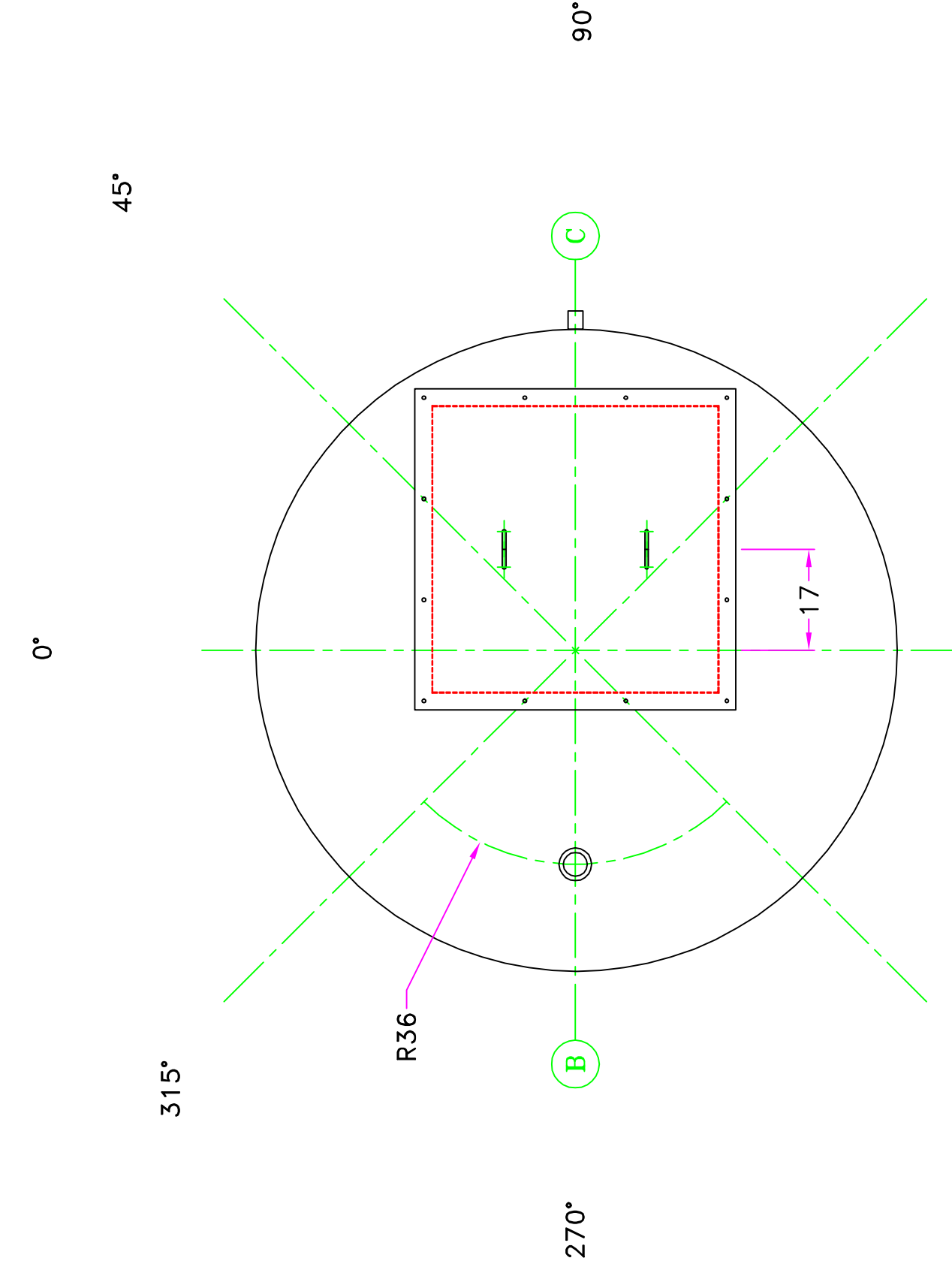
DRAIN (C)



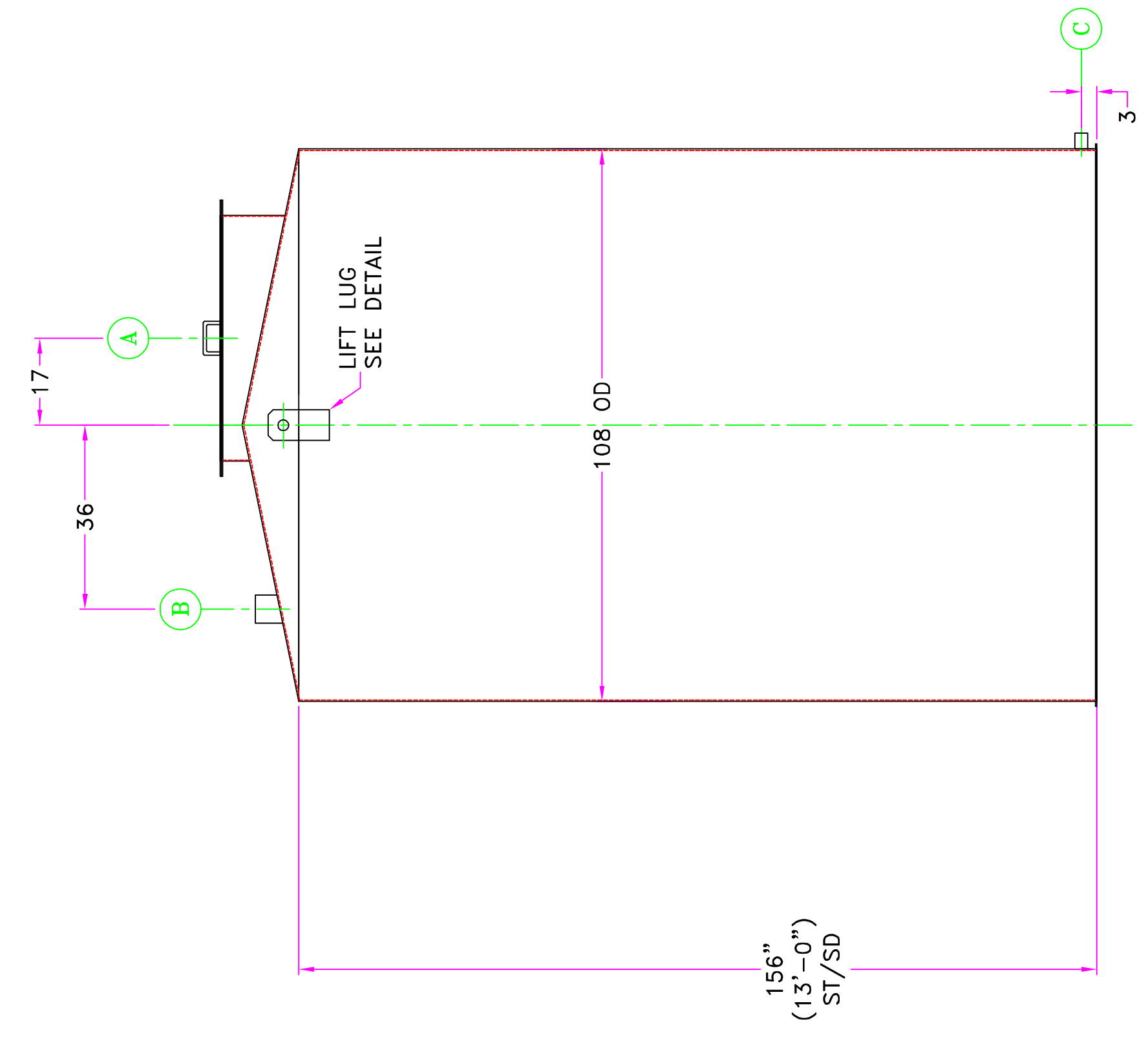
DETAIL @ WELD JOINT



WELD JOINTS



PLAN



ELEVATION

MARK	REOD	SIZE	NECK	RATING	TYPE	DETAIL SHEET
C	1	1 1/2		STD	HALF CPLG	1
B	1	4		STD	FULL CPLG	1
A	1	48 X 48	7 GA		FAB	1
					ACCESS HATCH	
					SERVICE	

SCHEDULE

NO.	DATE	BY	REVISION